

ENERGY®

Power for life



E-Power
Range

Italiano - English - Français

MADE IN ITALY





ENERGY®
Power for life



IT. BESS – Sistemi di stoccaggio dell'energia in batteria.

EN. BESS - Battery Energy Storage System.

FR. BESS – Systèmes de stockage d'énergie sur batterie.

IT. E-POWER powered by ENERGY è un sistema di stoccaggio dell'energia che può operare indipendentemente o in combinazione con l'energia solare, con la rete e con i generatori, garantisce ZERO rumorosità e ZERO emissioni durante il funzionamento.

EN. E-POWER powered by ENERGY is an energy storage system which can operate independently or in combination with solar panels, electricity and generators, it guarantees ZERO noise and ZERO emissions during operation.

FR. E-POWER powered by ENERGY est un système de stockage d'énergie qui peut fonctionner en autonomie ou en combinaison avec des panneaux solaires, du réseau électrique et des groupes électrogènes. Utilisation garantie avec insonorisation complète et zéro émissions.



IT. È facile da utilizzare e ha funzionalità Plug&Play.

EN. It's easy to use and Plug&Play in the functionalities.

FR. Il est facile à utiliser et équipé de la technologie Plug & Play.

IT. L'obiettivo principale è garantire un'elevata efficienza ed ottimizzare le situazioni critiche in termini di carico, carburante e rumore.

EN. The main target is to guarantee high efficiency and optimize critical applications in terms of load, fuel and noise.

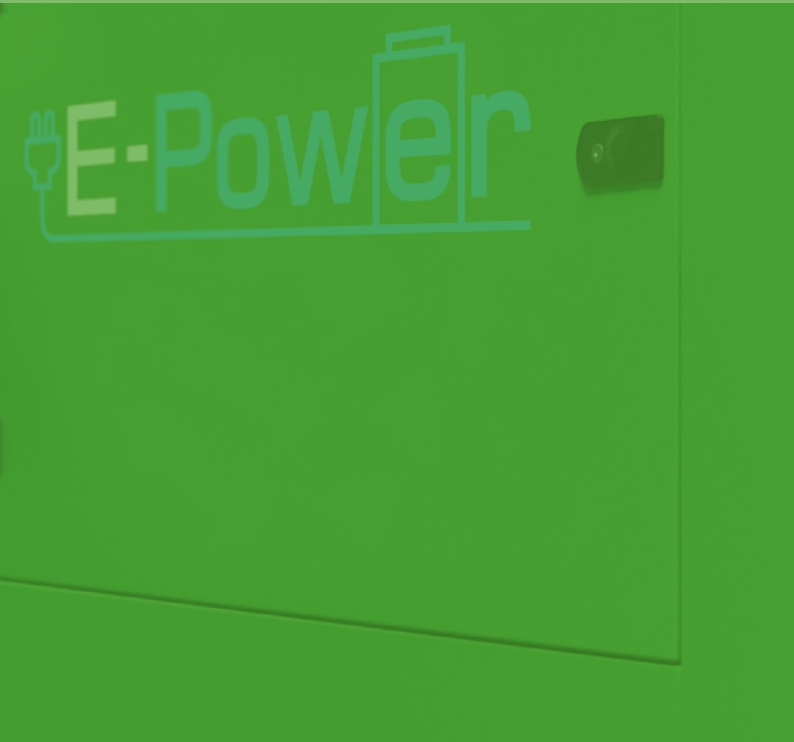
FR. L'objectif principal est de garantir une efficacité élevée et d'optimiser les situations critiques en termes de charge, de carburant et de bruit.



IT. Niente più picchi, problematiche di basso carico, fumo nero o manutenzione.

EN. No more peaks, wet stacking, black smoke, maintenance.

FR. Plus de pics de charge, problèmes de bas charge, fumée noir, entretien.



IT. ZERO emissioni, ZERO rumore, ZERO Liquidi.

EN. ZERO emissions, ZERO noise, ZERO liquids.

FR. AUCUNE émissions, AUCUN bruits, AUCUN liquides.

IT. Plug&Play con l'energia solare, la rete, i generatori.

EN. Plug&Play with solar panels, mains, generators.

FR. Plug&Play avec Solaire, réseau, générateurs.

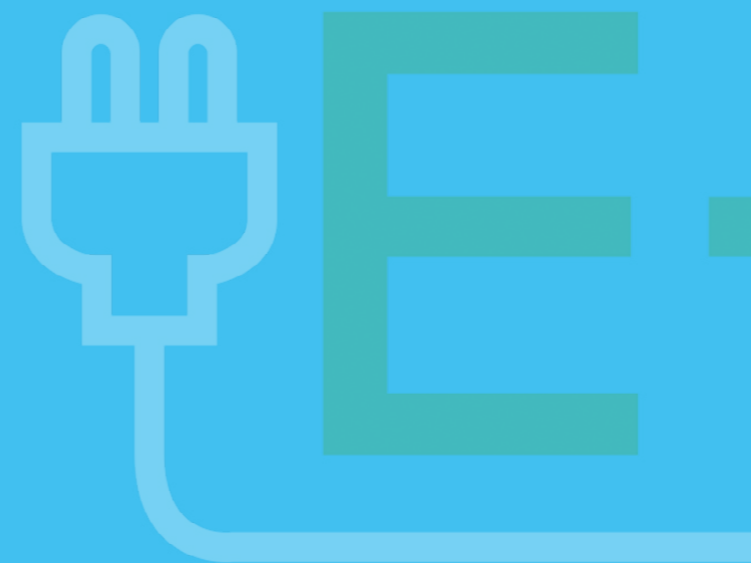




IT. Funzionalità UPS, tempo di risposta 20ms.

EN. UPS functionality response time 20ms.

FR. Fonctionnalité UPS temps de réponse 20ms.



IT. Basamento Rental per una facile movimentazione e maggior robustezza.

EN. Rental Design for easy transportation and robustness.

FR. Châssis rental pour faciliter maniabilité et une plus grande robustesse.

IT. Durante l'uso IBRIDO: durata del motore 2 volte maggiore, riduzione della manutenzione di 5 volte, riduzione del carburante del 50%.

EN. During HYBRID use: 2 times more engine lifetime, 5 times maintenance reduction, 50% fuel reduction.

FR. En utilisation HYBRIDE : 2 fois plus de durée de vie du moteur, 5 fois moins de maintenance, 50 % de réduction de consommation de carburant.

CHI LO USA?

IT. Cantieri con problemi di rumorosità.

EN. Construction sites with noise problems.

FR. Chantiers avec problèmes de bruit.

IT. Noleggio giornaliero senza l'utilizzo di carburante.

EN. Day rent without using fuel.

FR. Location à la journée sans l'utilisation du carburant.



VRM
Victron Energy



WHO USES IT?

IT. Come back up per le aziende, data la sua capacità UPS.

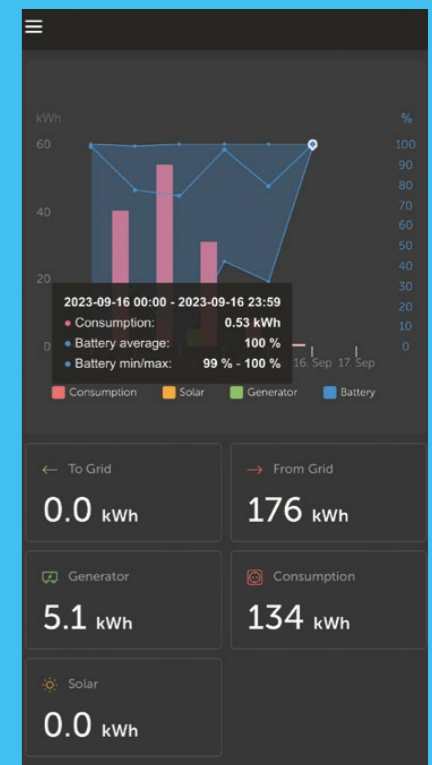
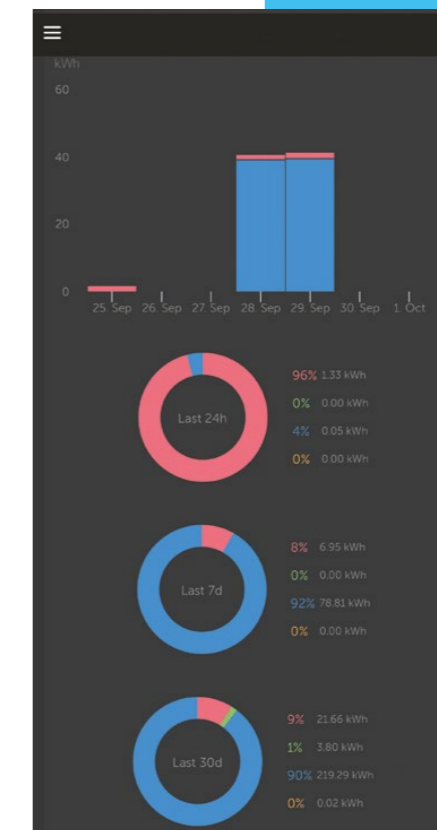
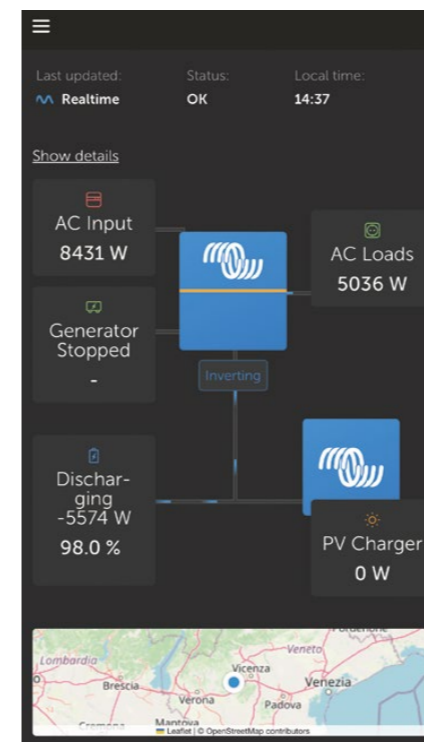
EN. As back up to companies with it's UPS capability.

FR. En secur aux entreprises avec sa fonction UPS.

IT. Aziende di noleggio strutturate.

EN. High-end rental companies.

FR. Sociétés de location bien structuré.



QUI L'UTILISE?

IT. Net zero 2030 / aziende carbon neutral

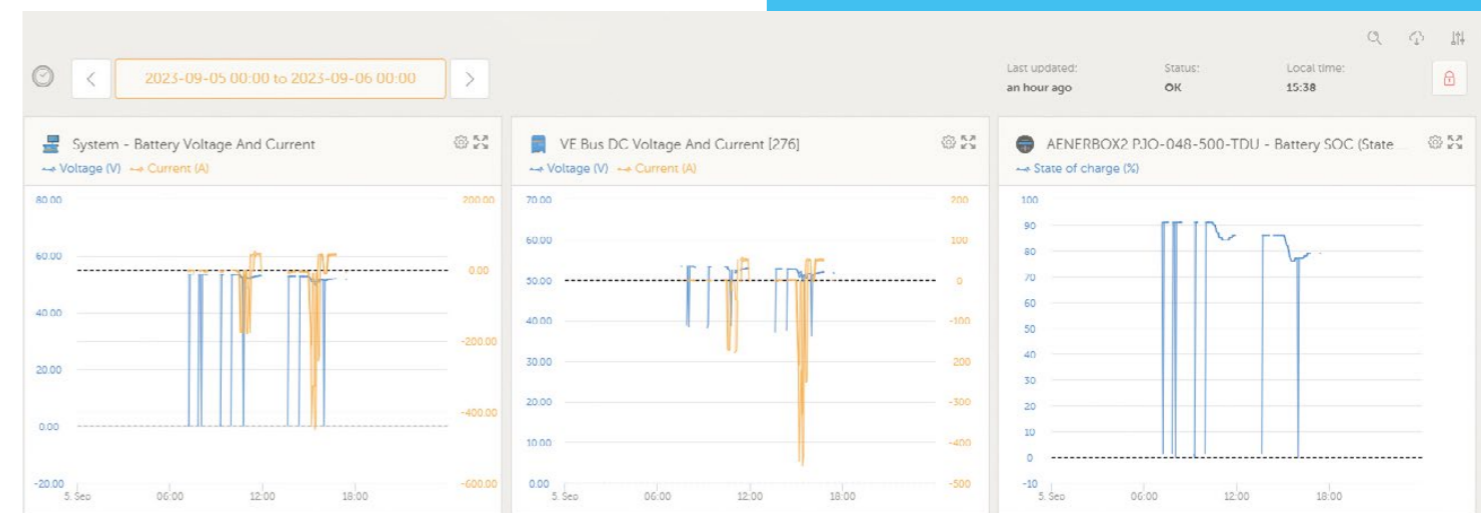
EN. Net Zero 2030 / carbon neutral companies.

FR. Net Zero 2030 / entreprises carbon neutral.

IT. Aree remote (difficoltà nel fare manutenzione o rifornimento).

EN. Remote areas (difficult to do maintenance or refill).

FR. Régions éloignées (entretien ou remplissage difficile).



FULL ELECTRIC

modello model modèle	Potenza nominale Nominal power Puissance nominale	Capacità di accumulo Storage capacity capacité de stockage	Frequenza Frequency Fréquence	Voltaggio Voltage Tension	Peso Weight Poids	Dimensioni Dimensions Dimensions
	[kVA]	[kWh]	[Hz]	[V]	[Kg]	[mm]
EP 24/24	24	24	50	400	875	1650x1180x1900H
EP 24/48	24	48	50	400	1066	1650x1180x1900H
EP 24/96	24	96	50	400	1460	1650x1180x1900H
EP 45/48	45	48	50	400	1150	1650x1180x1900H
EP 45/96	45	96	50	400	1550	1650x1180x1900H

HYBRID

modello model modèle	Potenza nominale Nominal power Puissance nominale	Capacità di accumulo Storage capacity capacité de stockage	Capacità del generatore Generator Capacity Capacité du générateur	Modello del motore Engine model Modèle de moteur	Frequenza Frequency Fréquence	Voltaggio Voltage Tension	Peso Weight Poids	Dimensioni Dimensions Dimensions
	[kVA]	[kWh]	[kVA PRP]	[Stage V]	[Hz]	[V]	[Kg]	[mm]
EPH 24/24/18	24	24	18	Yanmar 4TNV88	50	400	1550	TBD
EPH 24/48/18	24	48	18	Yanmar 4TNV88	50	400	1700	TBD
EPH 24/96/18	24	96	18	Yanmar 4TNV88	50	400	2100	TBD
EPH 45/48/43	45	48	43	Yanmar 4TNV98CT	50	400	2200	TBD
EPH 45/96/43	45	96	43	Yanmar 4TNV98CT	50	400	2700	TBD

EP 24/48

modello model modèle	Batteria -Battery -Batterie			Tempo di ricarica Recharge Time Temps de recharge	
	[Type]	[Quantity]	[Cycles @ 90%]	[20-90%]	[20-100%]
EP 24/24	LiNMC	1	6000	1.10Hr	1.25Hr
EP 24/48	LiNMC	2	6000	2.45Hr	3.10Hr
EP 24/96	LiNMC	4	6000	4.30Hr	5Hr
EP 45/48	LiNMC	2	6000	1.1Hr	1.25Hr
EP 45/96	LiNMC	4	6000	2.45Hr	3.10Hr

modello model modèle	Batteria -Battery -Batterie			Tempo di ricarica Recharge Time Temps de recharge	
	[Type]	[Quantity]	[Cycles @ 90%]	[20-90%]	[20-100%]
EPH 24/24/18	LiNMC	1	6000	1.20Hr	1.30Hr
EPH 24/48/18	LiNMC	2	6000	2.30Hr	2.50Hr
EPH 24/96/18	LiNMC	4	6000	5Hr	5.45Hr
EPH 45/48/43	LiNMC	2	6000	1.10Hr	1.20Hr
EPH 45/96/43	LiNMC	4	6000	2.15Hr	2.40Hr

ENERGY®

V18Y/V20KH	GIORNO/DAY/JOUR	MESE/MONTH/MOIS	ANNO/YEAR/ANNÉE
H	11 h	230 h	2550 h
L*	44 L = € 80	924 L = € 1.680	10.100L = € 18.300
MAINTENANCE	/	€ 350	€ 3.500
TOT. COST	€ 80	€ 2.030	€ 21.800

1 L = €1.8

CASE STUDY


EP 24/48 + V18Y o - EPH 24/48/18	GIORNO/DAY/JOUR	MESE/MONTH/MOIS	ANNO/YEAR/ANNÉE
H	11 h	230 h	2550 h
L*	26 L = € 47	550 L = € 980	6.000L = € 10.800
MAINTENANCE	€ 0	€ 0	€ 350
TOT. COST	€ 47	€ 980	€ 11.150

1 L = €1.8

IT. Media del carico giornaliero 32%, 11ore di lavoro, picco di 18kVA, media di 8,5kVA

EN. Everage daily load 32%, 11Hr of work, peak 18kVA, everage 8,5kVA

FR. Charge à la journée moyenne 32 %, 11Heures de travail, peak 18kVA, moyenne 8,5kVA

EP 24/48 + RETE/MAINS/RÉSEAU	GIORNO/DAY/JOUR	MESE/MONTH/MOIS	ANNO/YEAR/ANNÉE
H	11 h	230 h	2550 h
	88 kWh = € 11	1.840 kWh = € 221	20.400 kWh = € 2.450
MAINTENANCE	0	0	0
TOT. COST	€ 11	€ 221	€ 2.450

1 kWh = €0,12



EP 24/48 + SOLARE/SOLAR/SOLAIRE	GIORNO/DAY/JOUR	MESE/MONTH/MOIS	ANNO/YEAR/ANNÉE
H	11 h	230 h	2550 h
	88 kWh = € 0	1.840 kWh = € 0	20.400 kWh = € 0
MAINTENANCE	0	0	0
TOT. COST	€ 0	€ 0	€ 0



ENERGY®

Power for life


Range



ENERGY S.R.L.

Via del Progresso, 35 • 36054 Montebello Vicentino, VI • Italia
T. +39 0444 450422 • Fax +39 0444 457904
info@energy-gruppi.it • www.energy-gruppi.it



MADE IN ITALY

